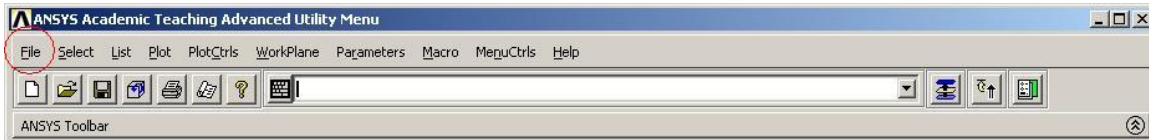
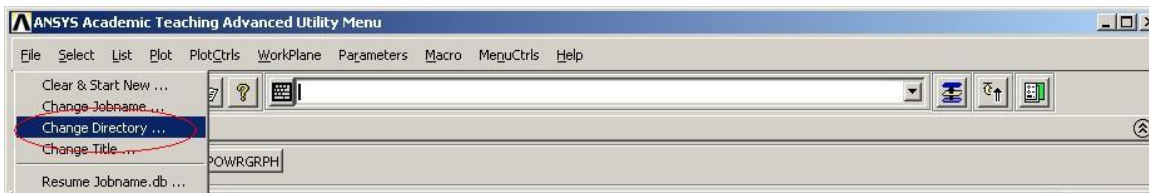


Save Temporary Ansys Files Locally to Avoid Exceeding Your Quota

- Open **Ansys 11.0**
- Click on **File**



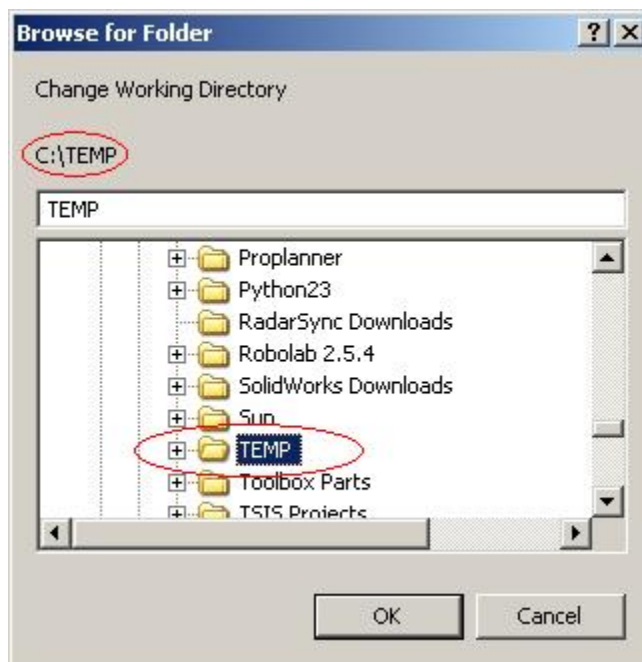
- Click on **Change Directory...**



- You should see a window similar to the following:



- Change the working directory from **Z:** to **C:\TEMP**



- Click on **OK**
- You should now be working in **C:\TEMP**
- Remember to move final results to your **Z:** drive or to your **Courses** directory