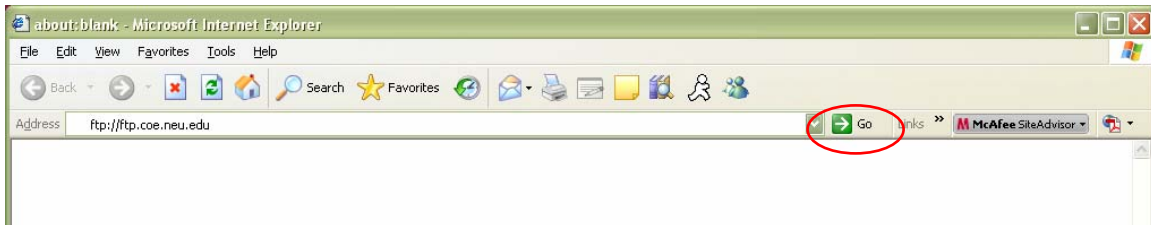


Accessing your COE home directory from Internet Explorer

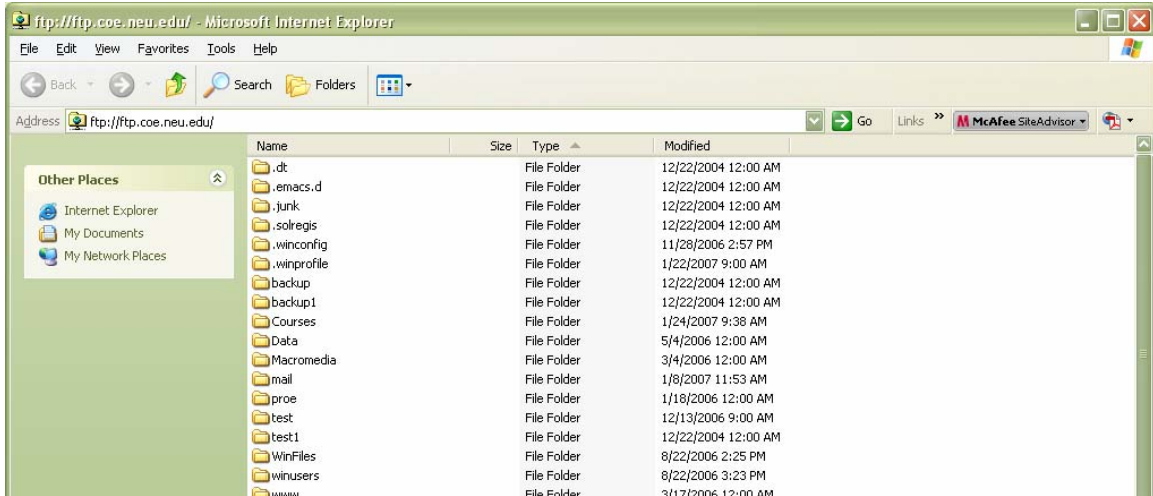
- Open **Internet Explorer** (6+)
- In the **Address** bar, type in <ftp://ftp.coe.neu.edu> and press **Enter** or click on **Go**



- Enter your COE username and password and click on **Log On**



- You will now be in your home directory. You should now be able to drag and drop files from your local computer to your home directory.



If you have any additional questions or problems, send an email to help@coe.neu.edu. Include detailed information about the problem you are having (screenshots are preferable).