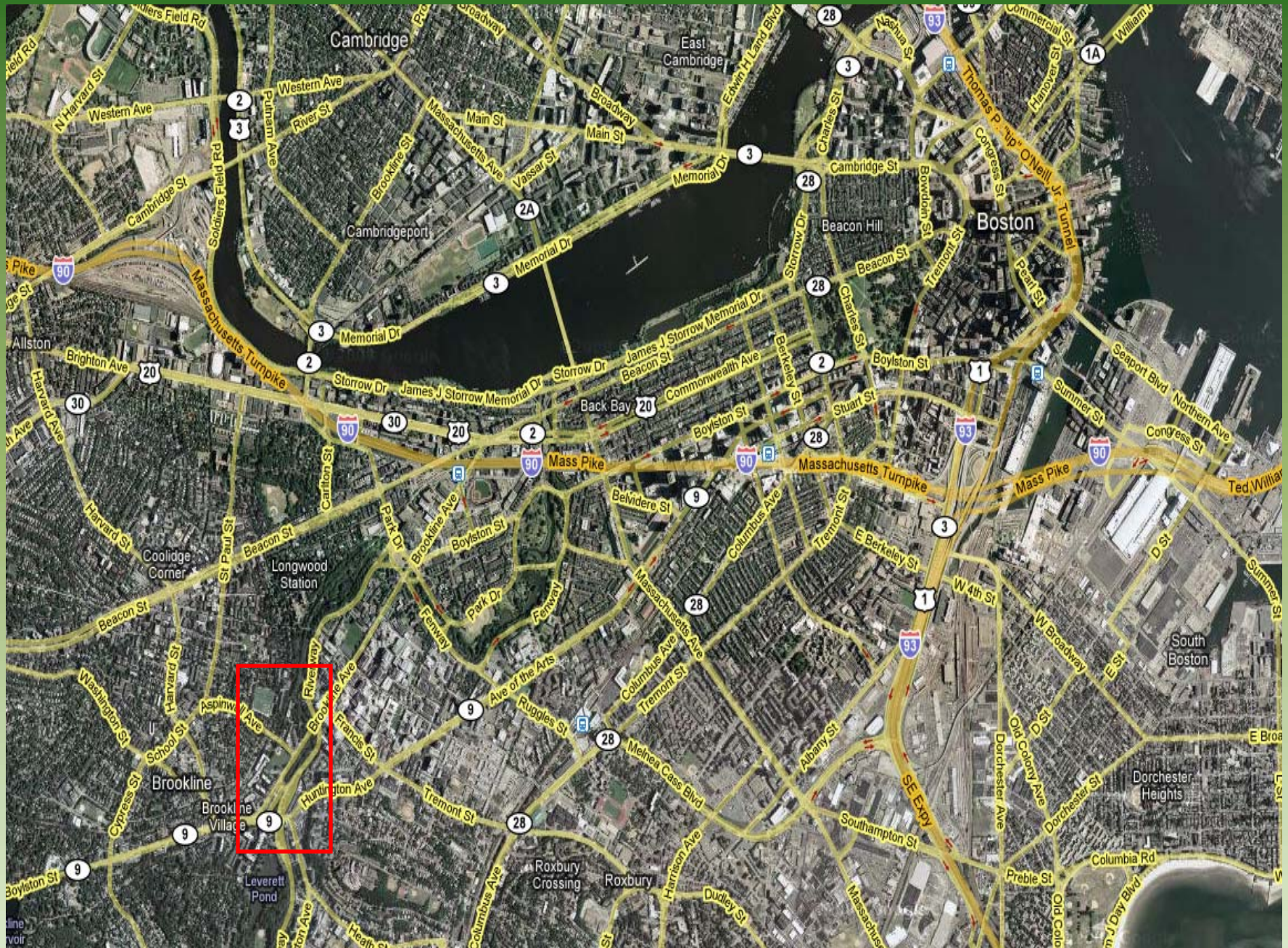


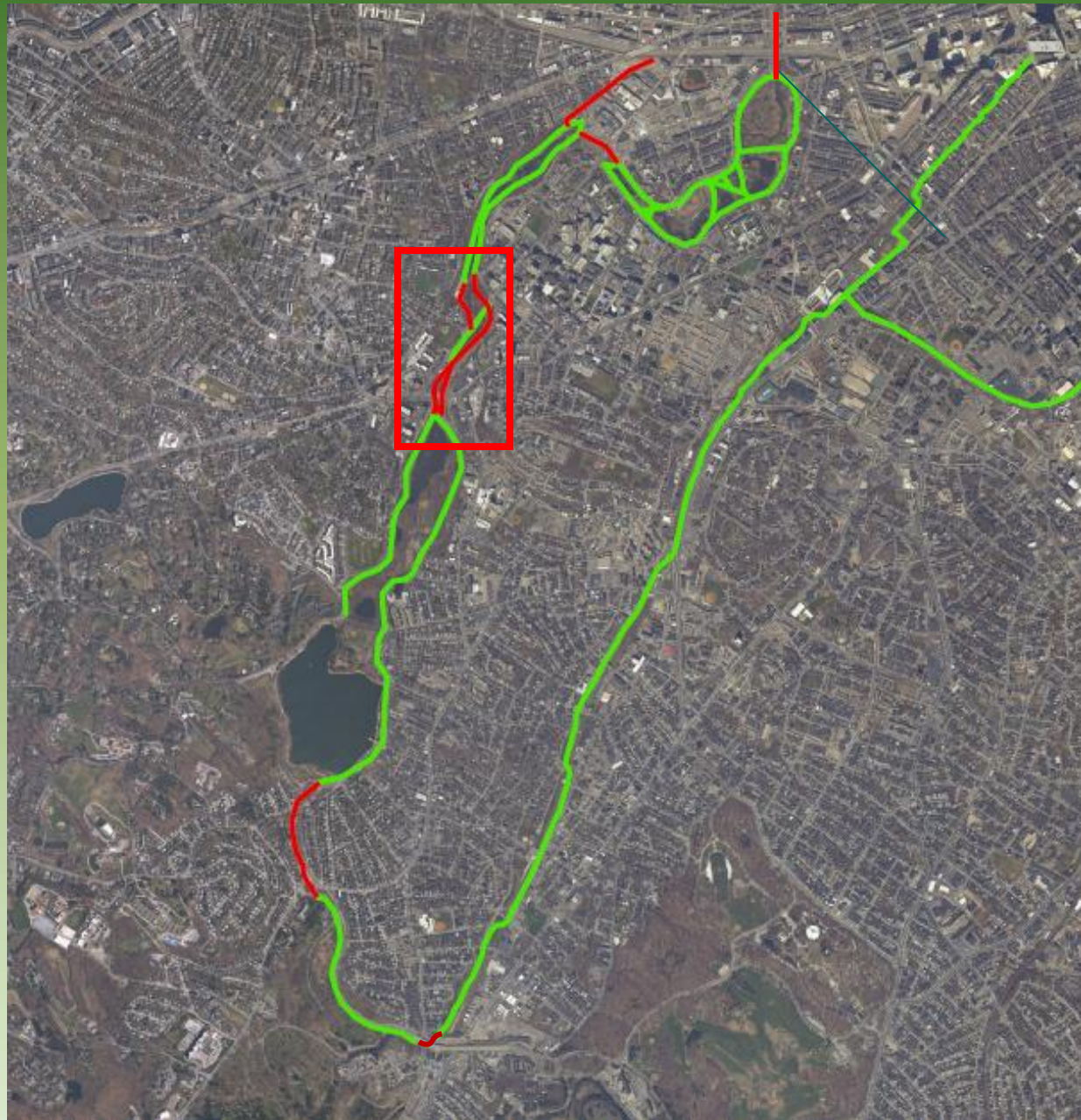
Bridging the Gaps in the Emerald Necklace

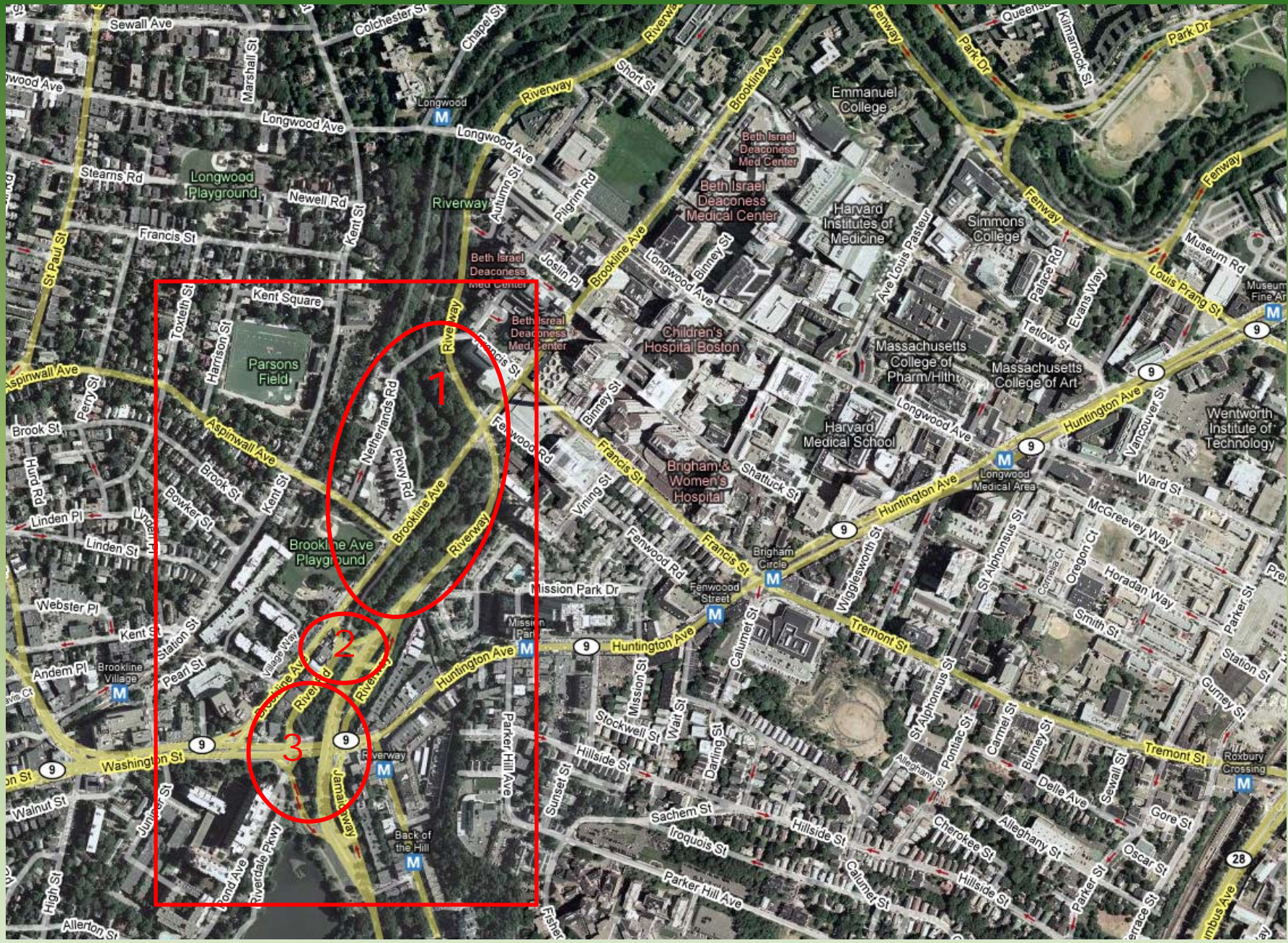


Tony Cennamo
Allison Goulet

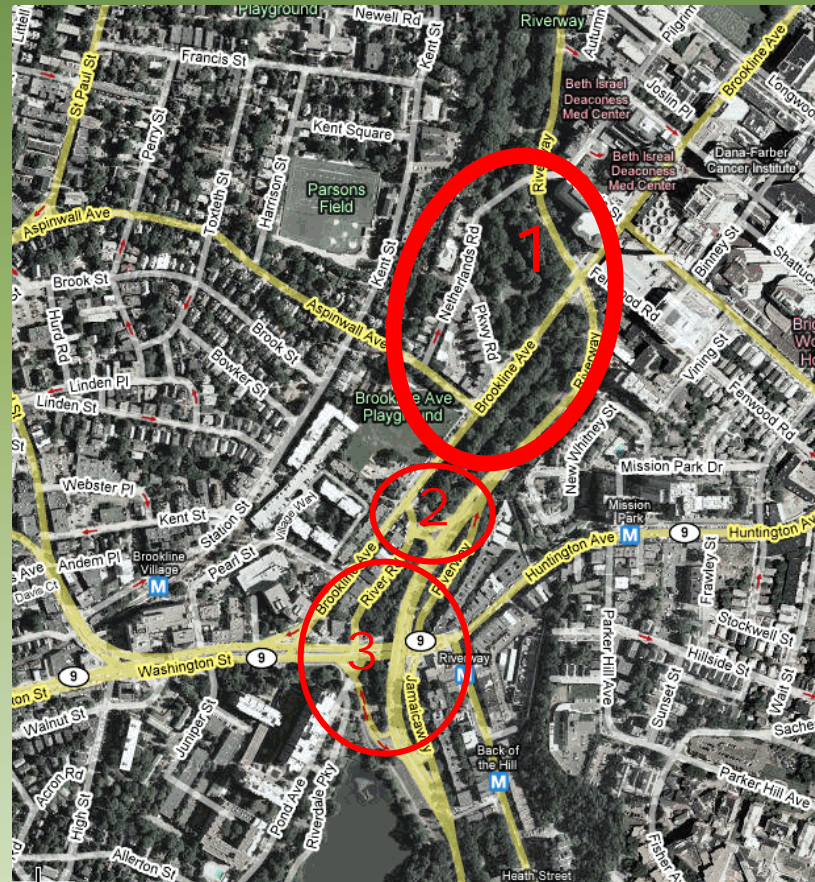
Zach Shapiro
Ryan St.Martin



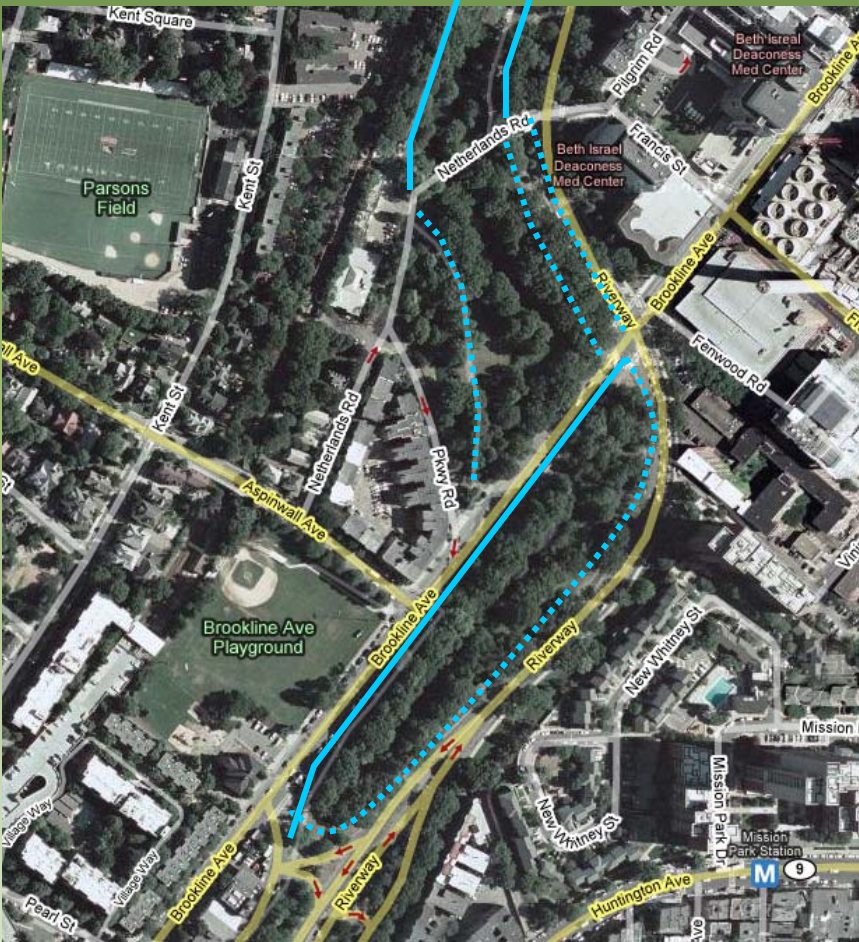




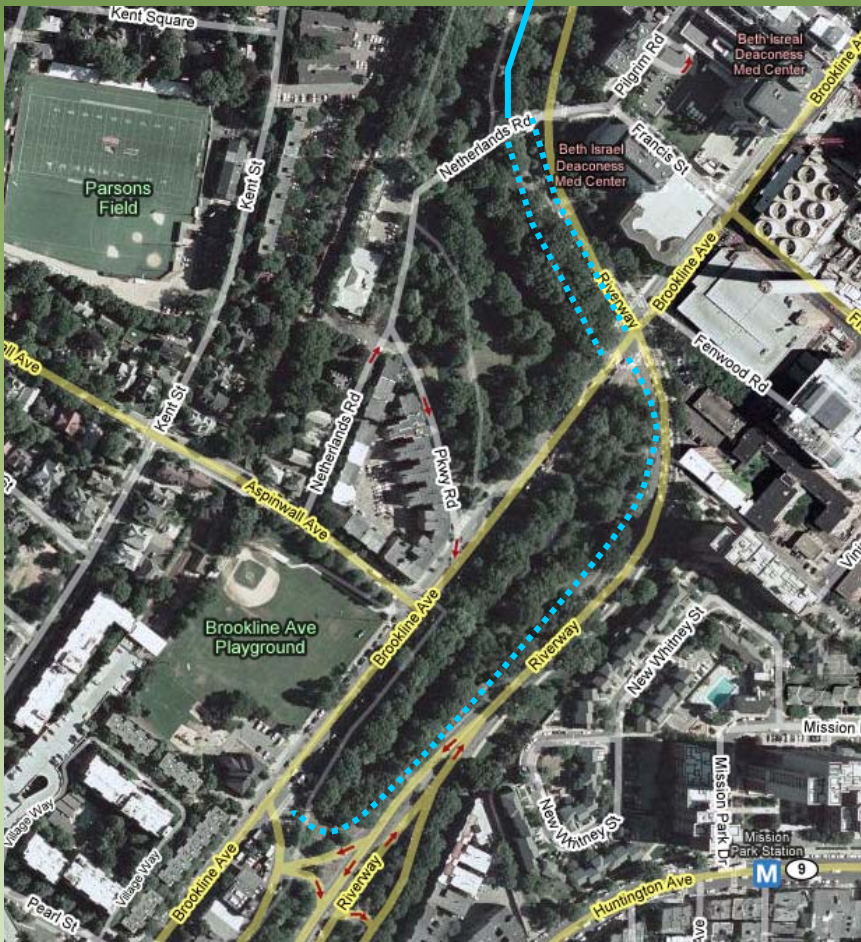
Netherlands Road and Brookline Avenue



Netherlands Road and Brookline Avenue Existing Conditions



Boston Side Paths



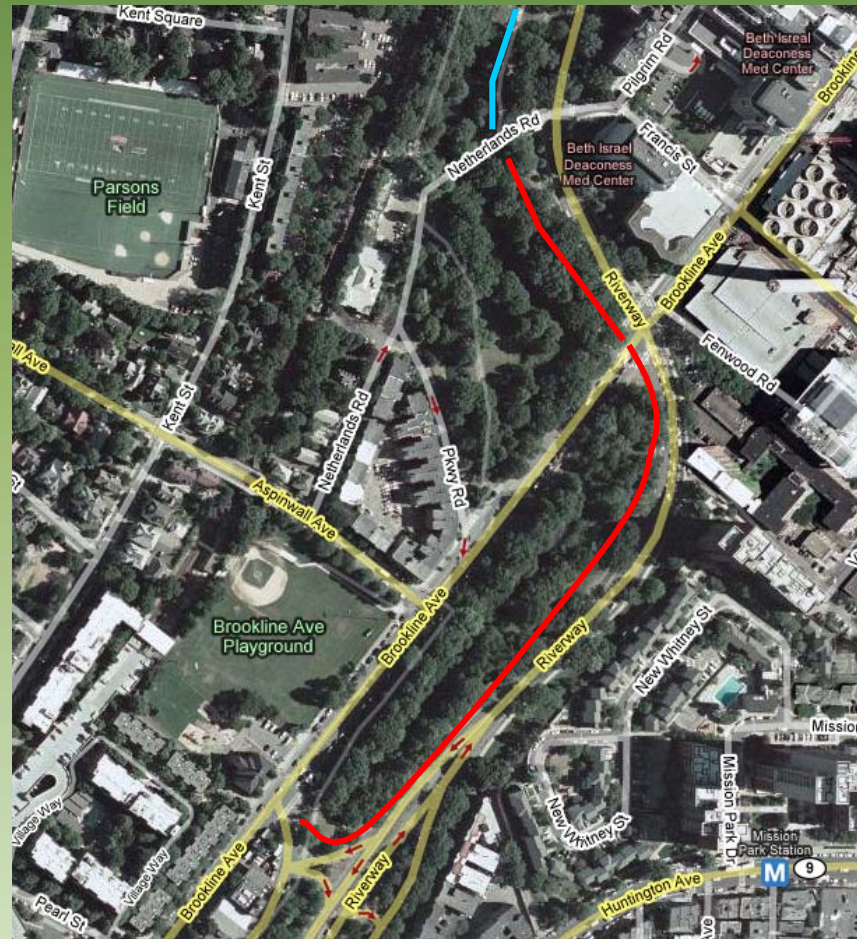








Boston Side Summary







Netherlands Road Design

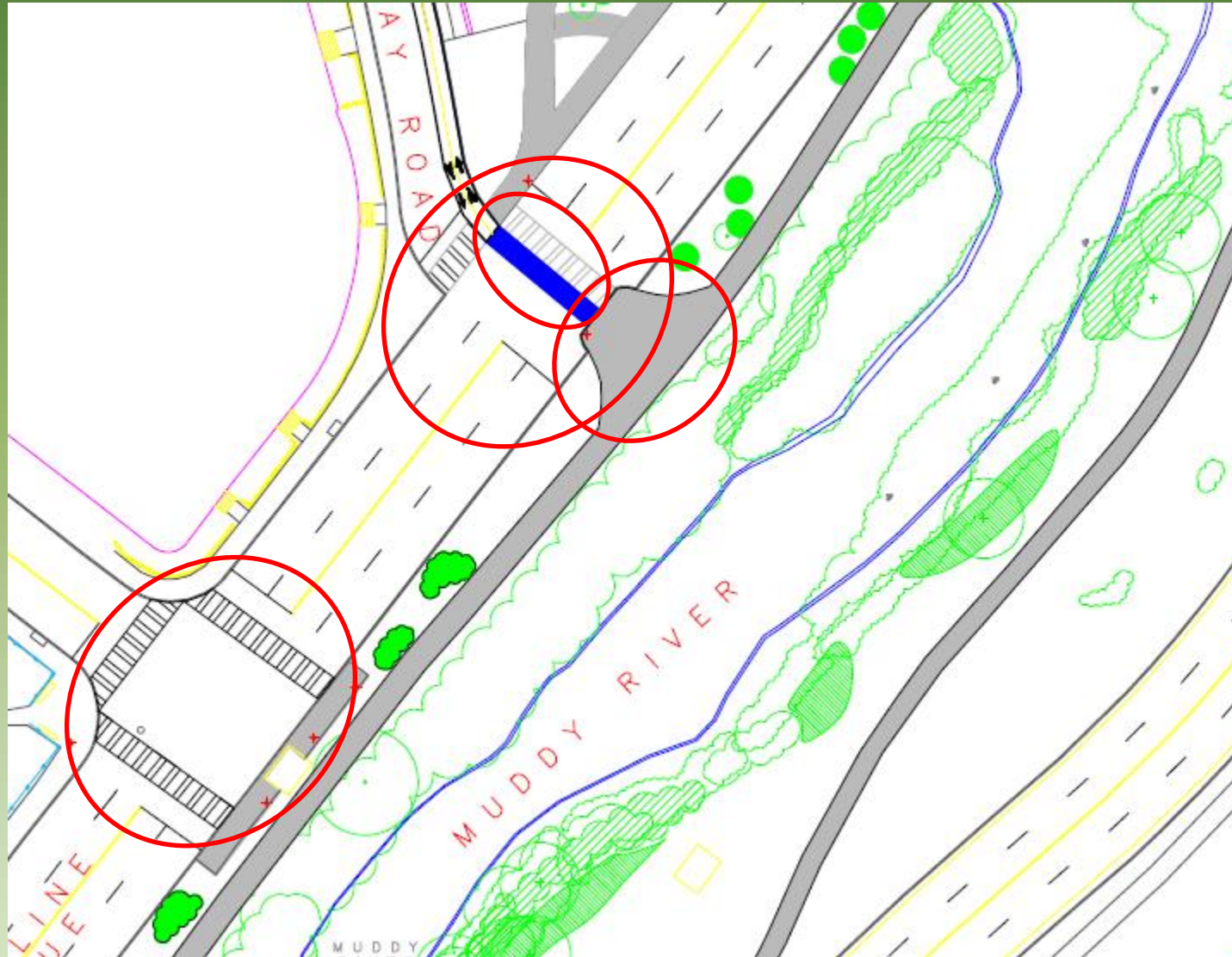


Parkway Road Design

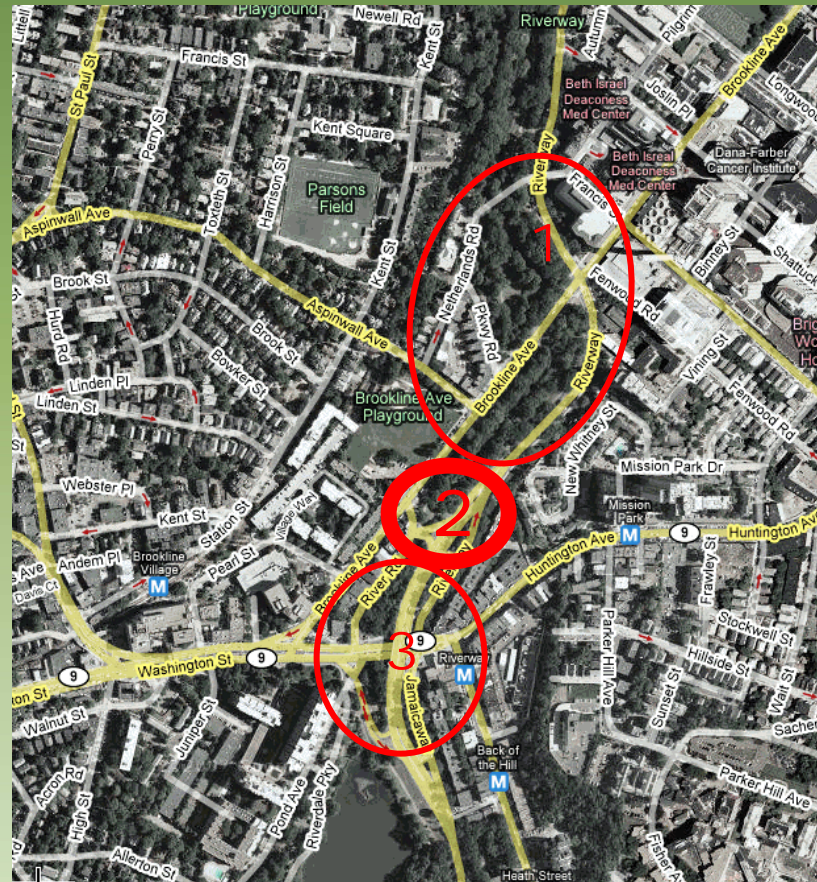




Brookline Crossing Design



River Road



River Road Crossing Existing Conditions



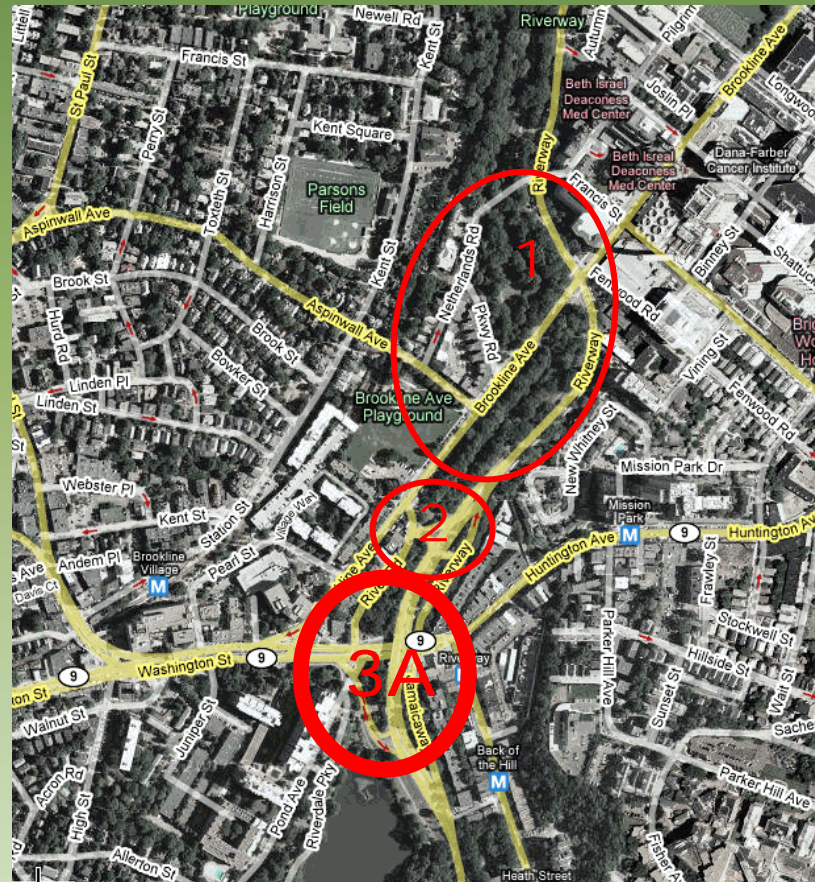




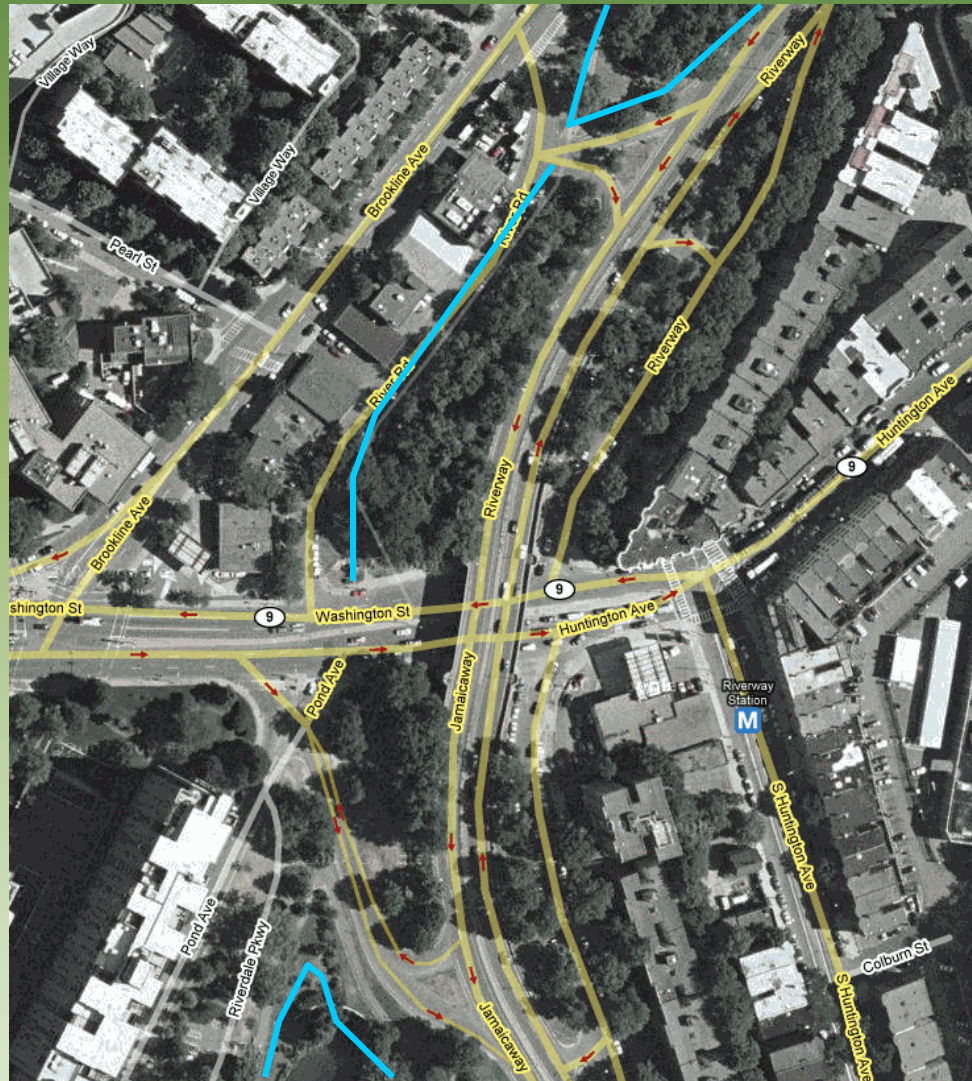
River Road Design



Route 9 At-Grade Crossing



Route 9 At-Grade Crossing Existing Conditions





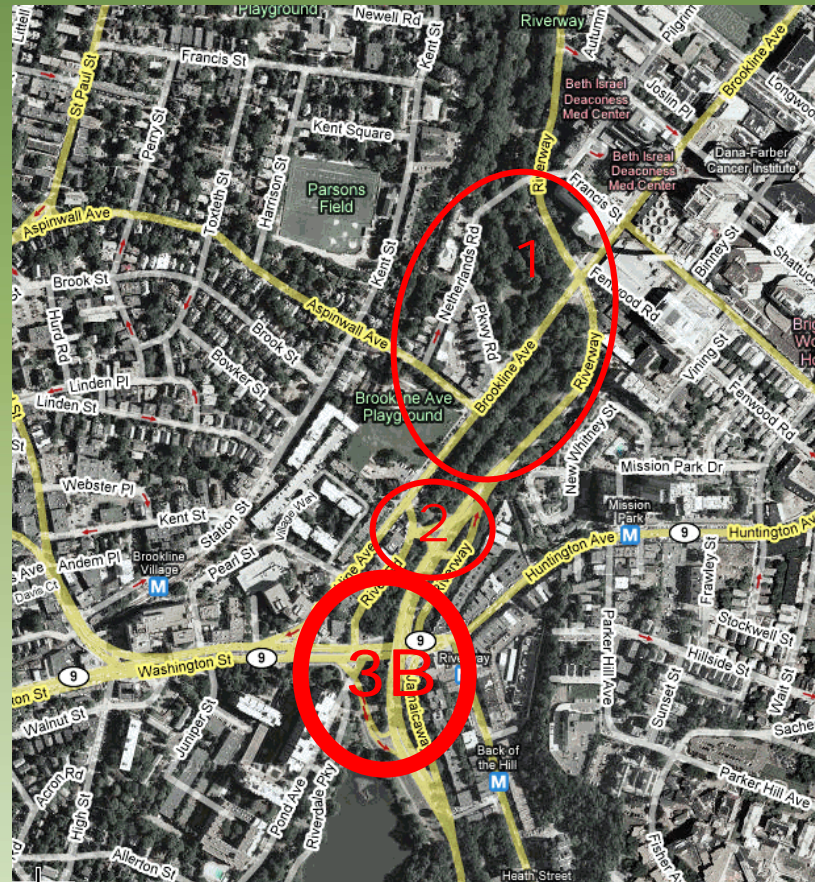




Route 9 At-Grade Design



Route 9 Grade-Separated Crossing

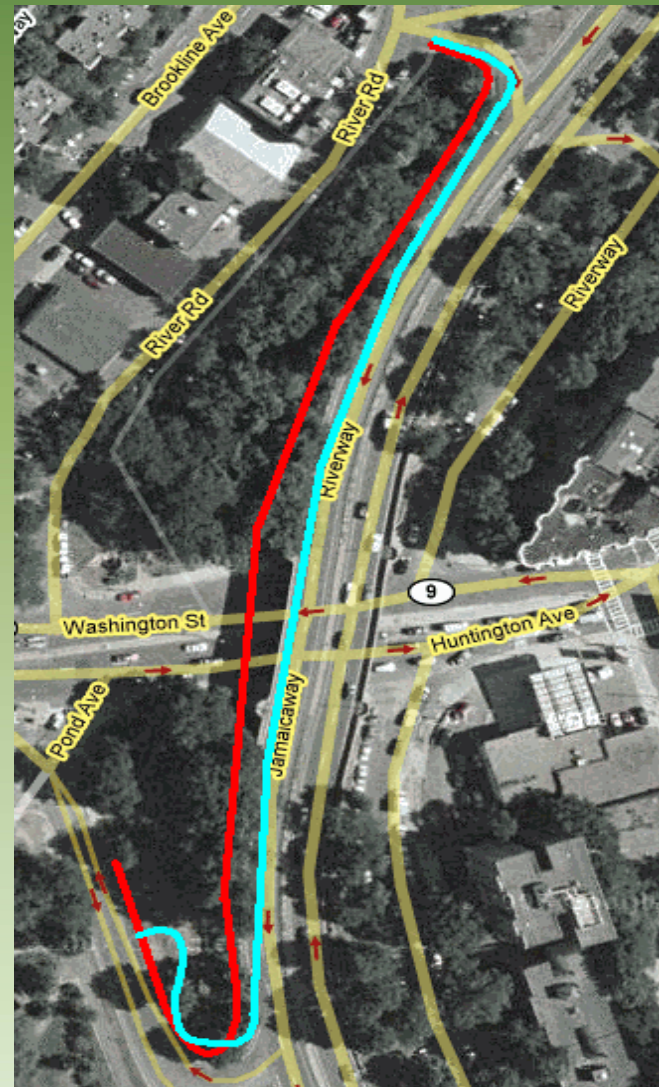


Section 3 Grade-Separated Alternatives



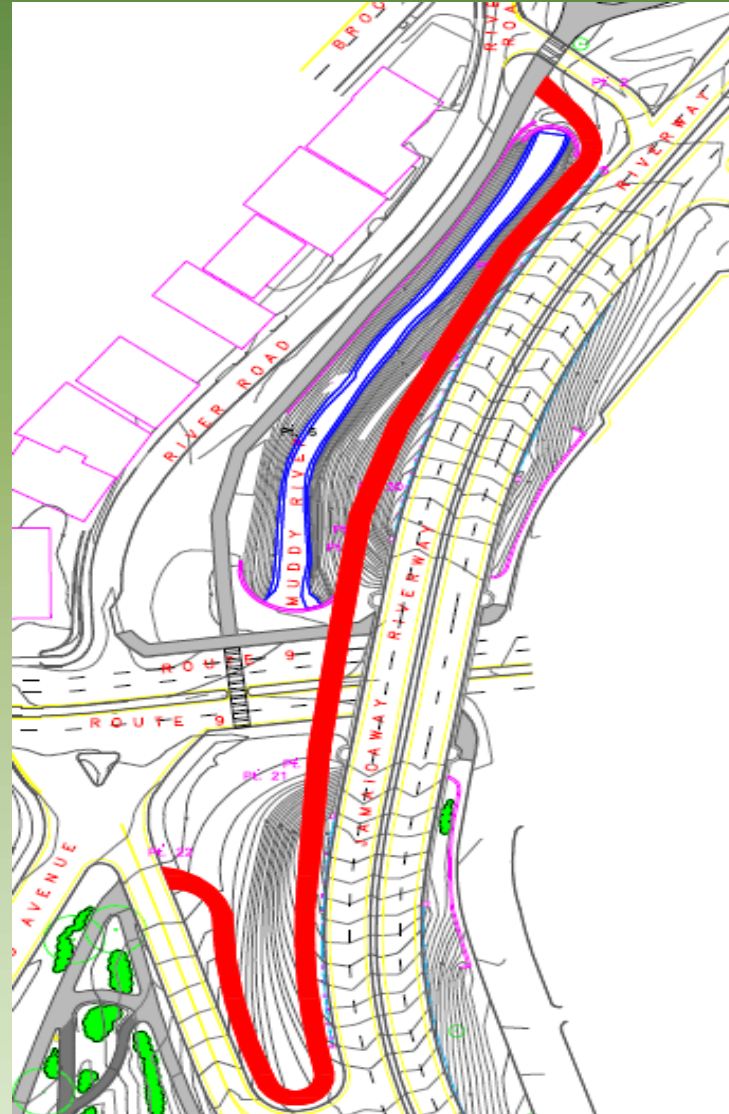
Grade-Separated Alternatives

- Alternative 1: Footbridge shown in **RED**
- Alternative 2: Curley Overpass shown in **BLUE**





Alternative 1: Separated Footbridge

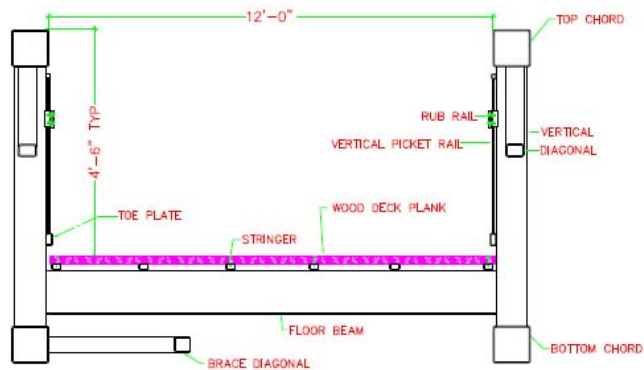
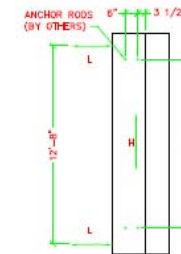
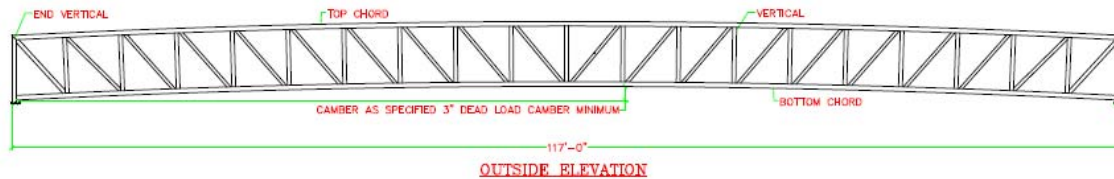








Footbridge Design



GENERAL NOTES:

- DESIGN IS IN ACCORDANCE WITH SERVICE LOAD REQUIREMENTS OF THE "AASHTO Guide Specifications for Pedestrian Bridges", 1997 Edition
- ALL STEEL HAS THE FOLLOWING PROPERTIES (UNLESS OTHERWISE NOTED):

a) TUBING:	ASTM A513	Fy = 50 ksi
b) PLATES:	ASTM A588	Fy = 50 ksi
c) SHAPES:	ASTM A588	Fy = 50 ksi
- THE GAS METAL ARC WELDING OR FLUX CORED ARC WELDING PROCESS WILL BE USED.
- ALL TOP AND BOTTOM CHORD SHOP SPICES TO BE COMPLETE PENETRATION TYPE WELDS. WELD BETWEEN TOP CHORD AND END VERTICAL SHALL BE COMPLETE PENETRATION TYPE WELDS ON BOTH SIDES WITH A PARTIAL PENETRATION GROOVE WELD ON THE TOP SIDE AND A FILLET WELD ON THE BOTTOM SIDE.
- DESIGN LOADINGS:
 - 85 psf UNIFORM LIVE LOAD
 - 10,000 lb VEHICLE LOADING
 - 35 psf WIND LOADING AGAINST HEIGHT OF STRUCTURE AS IF ENCLOSED.
- FINISH:
 - ALL EXTERIOR SURFACES OF STEEL SHALL BE CLEANED IN ACCORDANCE WITH STEEL STRUCTURES PAINTING COUNCIL SURFACE PREPARATION SPECIFICATIONS NO. 7 COMMERCIAL BLAST CLEANING, SSPC-SP7 -LATEST EDITION.

PRELIMINARY
ONLY

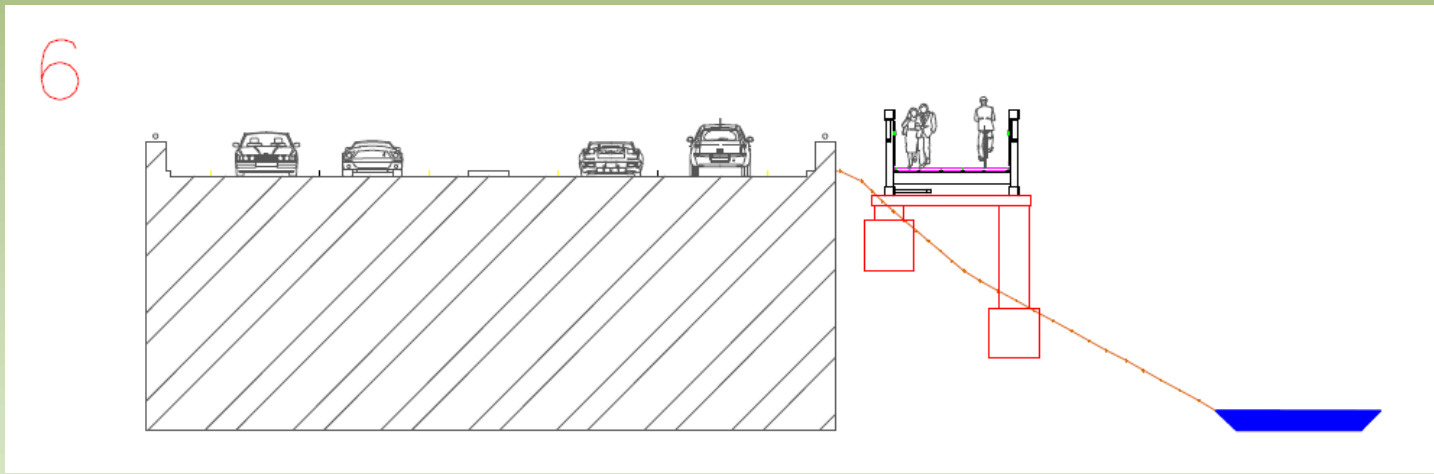
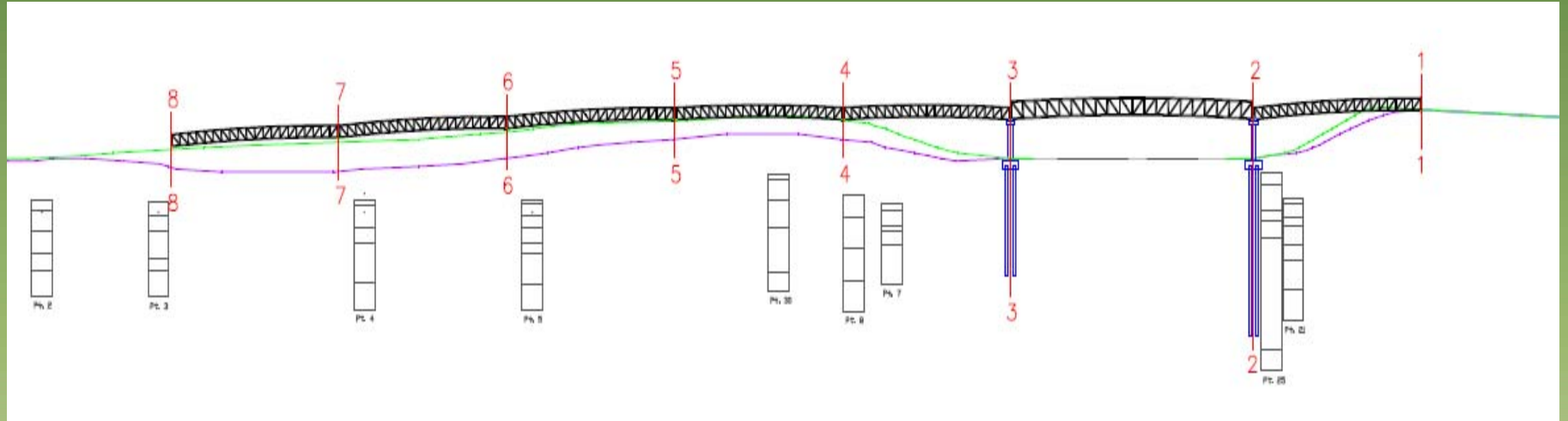
NOT FOR
CONSTRUCTION

08-01081

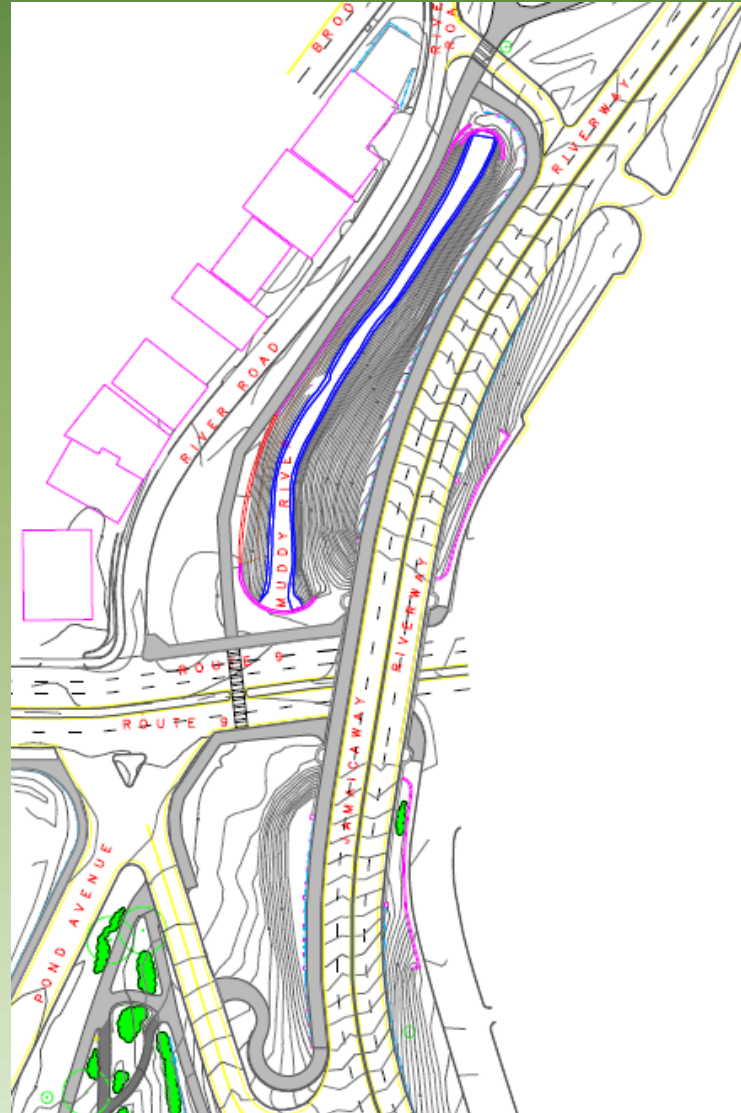


Emerald Necklace Bike Path
Boston, Massachusetts
117' x 12'

Footbridge Design



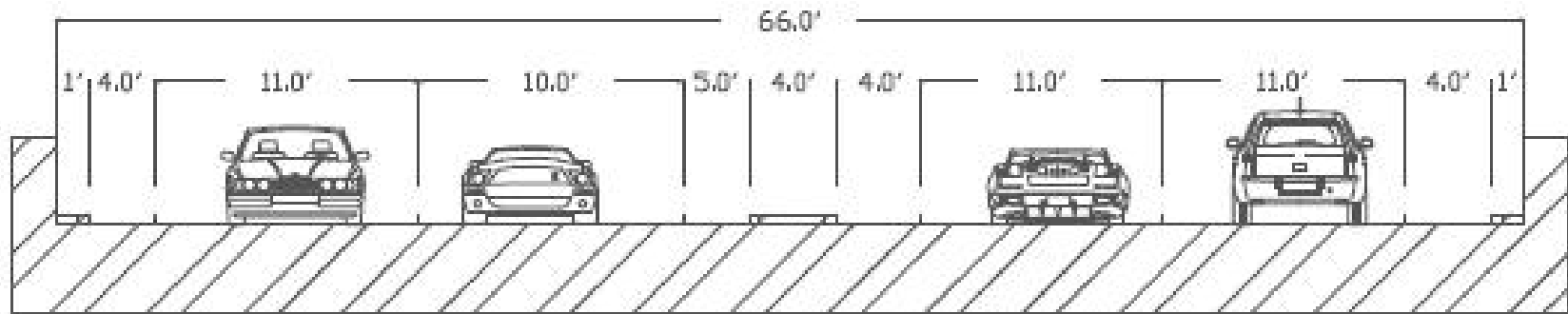
Alternative 2: Curley Overpass



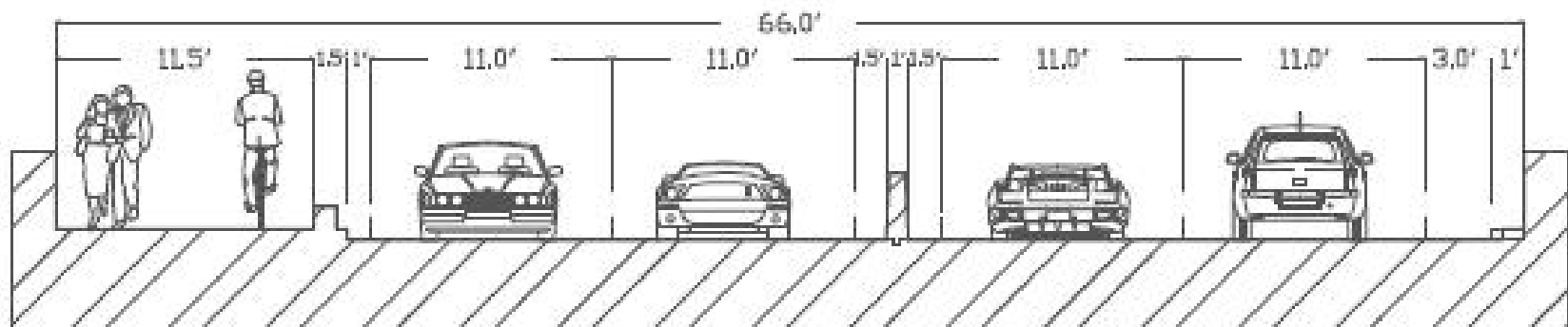




Curley Overpass Redesign



Existing Conditions



Proposed Redesign





Cost Comparison of Grade-Separated Crossing

Footbridge = \$1,030,000

Curley Overpass = \$215,000

Closing the Last Gap

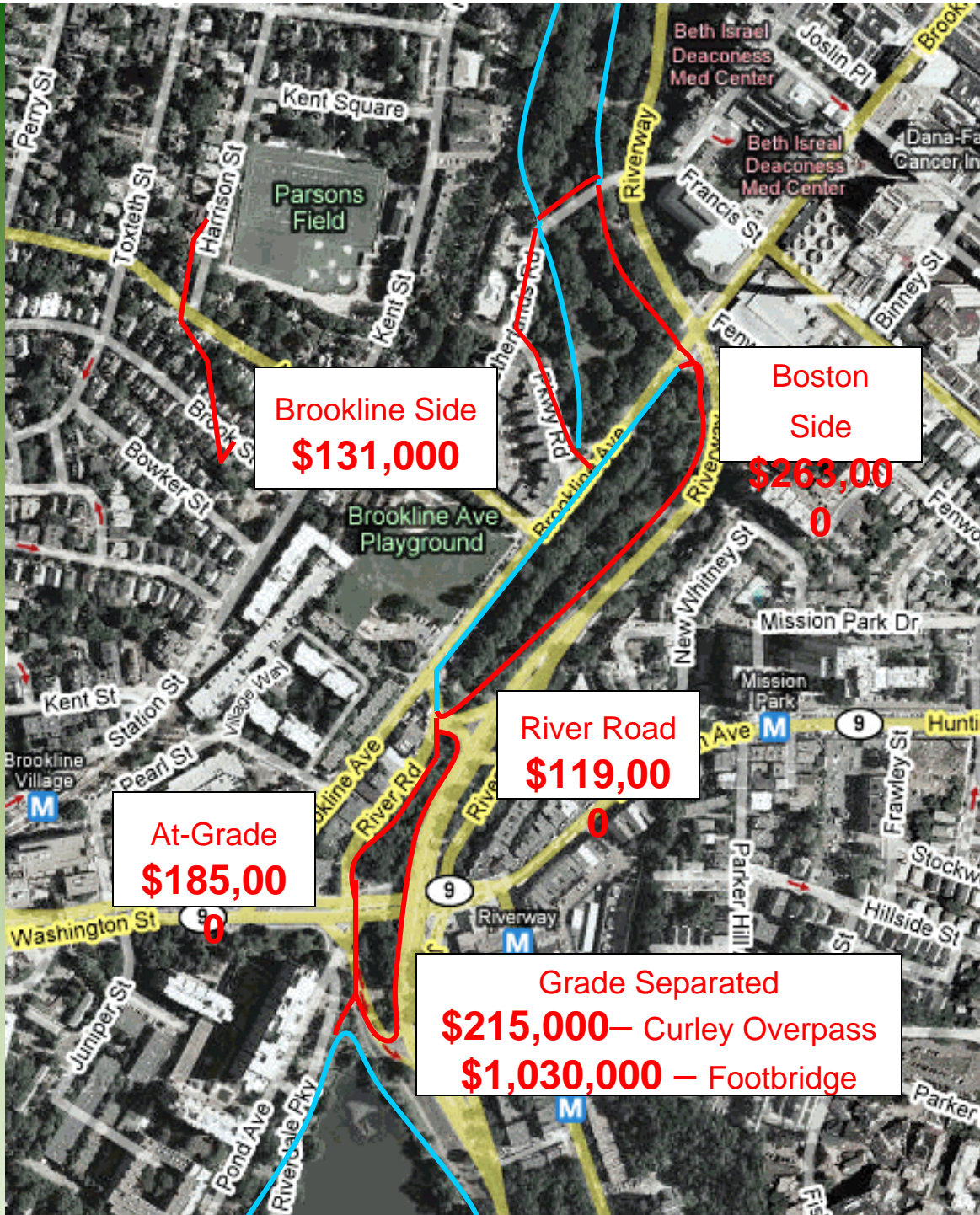


Connection to Olmsted Park



Summary

- Dual path system fully restored between Netherlands Road and Route 9
- Added a Net of 11,000 S.F. of Parkland
- Total cost for preferred alternatives with Curley Overpass Redesign is \$912,000



Questions?

